
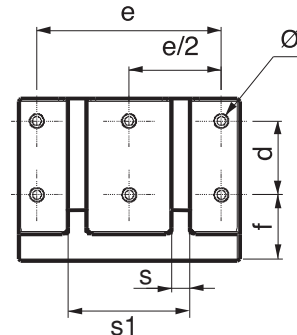
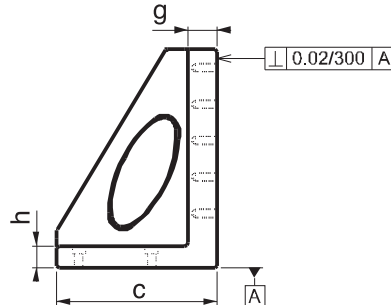
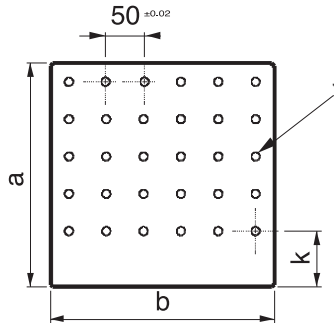


Referenz-Nr. Order No.	a	b	c	d	e	f	g	h	Ø _I	j	k	s	s1	 (kg)
2570-30012	300	300	220	100	250	90	40	30	18	M12	75	25	170	50
2570-40012	400	400	280	160	320	90	40	30	18	M12	75	30	240	88
2570-50012	500	500	345	200	400	90	50	35	18	M12	75	35	300	175
2570-63012	630	630	435	250	500	100	50	40	18	M12	105	40	360	298
2570-30016	300	300	220	100	250	90	40	30	18	M16	75	25	170	45
2570-40016	400	400	280	160	320	90	40	30	18	M16	75	30	240	84
2570-50016	500	500	345	200	400	90	50	35	18	M16	75	35	300	170
2570-63016	630	630	435	250	500	100	50	40	18	M16	105	40	360	293

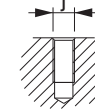
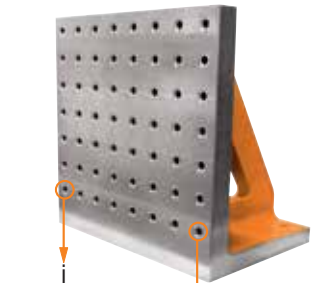
2570

- Material: Guss
- verwendbar bei horizontalen und vertikalen Bearbeitungszentren
- kompatibel mit Standard-Spannelementen
- M12-M16, Gewindeabstand 50 ± 0.02
- Auf Anfrage mit gehärteten Stahlbuchsen erhältlich



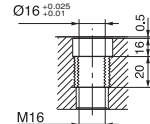
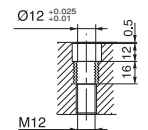
2570

- Material : Casting
- It is used in CNC Horizontal end Vertical processing benches.
- It is in compliance with Standard Coupling Equipment.
- M12 - M16 thread gap on it's surface is 50 ± 0.02 .
- It's steel bush threads are hardened.



Gewindekörper
Nr. 2570

Threaded body
Reference No. 2570



mit Stahlbuche
Nr. 2575
Steel bush
Reference No. 2575